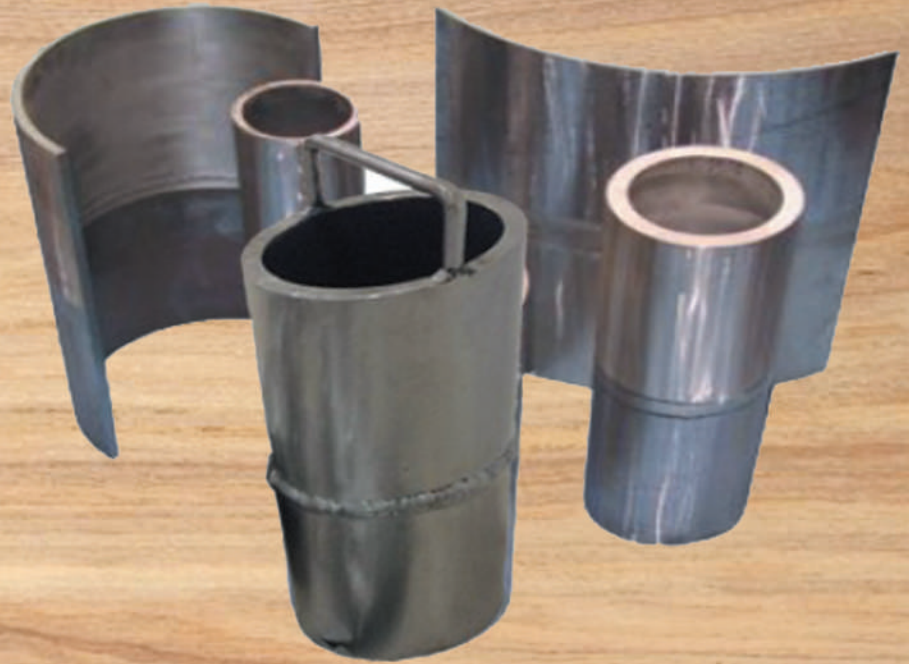


NDE TECH

The Product from India

The Reference Standards for NDT Industry

Supplement 2 Kit for Austenitic Piping



Supplement 2 Kit for Austenitic Piping

Geometry: Kit Contains 5 Specimens.

- Stainless Steel Welded Piping (2" Sch 80 x 24"L x 360° Seg.)
- Stainless Steel Welded Piping (4" Sch 80 x 24"L x 360° Seg.)
- Stainless Steel Welded Piping (6" Sch 160 x 24"L x 360° Seg.)
- Stainless Steel Welded Piping (12" Sch 80s x 24"L x 360° Seg.)
- Stainless Steel Welded Piping (24" Sch 80s x 24"L x 120° Seg.)

The kits are manufactured to meet the minimum requirements of ASME boiler & pressure vessel code, Section XI, Appendix VIII, of Supplement 3. At least 50% of the cracks will be coincident with fabricated conditions such as ground & "as-welded" crowns, counterbores & weld root conditions. Flaw depths will range from the 10-30% through the 61-100% depth ranges as specified in ASME Section XI, Appendix VIII. All flaws will be mechanical fatigue or thermal fatigue cracks with at least 75% of the cracks being thermal fatigue.
Critical tolerance: +/- 0.040" (1MM)

**NDE TECH
India.**

www.ndetech.org.in
info@ndetech.org.in
sales@ndetech.org.in
+91-44-24763755